

The Female FTSE Report 2009 100 Women to Watch

In this supplement, we have identified 100 'Women to Watch', who are currently in the executive committees of FTSE 100 or 250 companies, and are poised and ready for a board position. These women are selected from the largest organizations, but there are an additional 2,181 women in the pipeline, mentioned in the main report whom search consultancies and nomination committees should be considering.



SUE SCHOLES

Sue has been Director of Communications and Investor Relations at AMEC since 2007. Prior to that, she was Head of Investor Relations at Brambles Industries and held various positions, including finance roles, at Cadbury Schweppes, Esso and GKN. Sue is a Chartered Management Accountant.



LYNN TETRAULT

Lynn is Executive VP and Head of HR and Corporate Affairs at AstraZeneca since 2007. She is currently a board member of Medimmune Inc and was board member of the Human Resource Planning Society. Lynn holds qualifications from the University of Virginia School of Law and Princeton University.



NICOLE EAGAN

Nicole is Senior VP and Chief Marketing Officer at Autonomy since 2006. She was previously Senior VP of Marketing and Chief Marketing Officer at Verity and Global Marketing VP at Quest Software and Peregrine. She holds a BA in Science from the Montclair University.



AMANDA MAKENZIE

Amanda is Aviva's Group Marketing Director since 2008. Previous roles include Commercial and Marketing Director for British Gas, European VP of Marketing at Hewlett Packard and Group Marketing/Brand Director at BT. She is a Fellow of the Royal Society of Arts and the Marketing Society, a member of the Government Strategic Marketing Advisory Board and a governor of the National Youth Orchestra.



SUE SWENSON

Sue has been CEO North America at Sage Group since 2008. She has had a number of COO and CEO roles in companies such as PacTel Cellular, and T-Mobile USA (Deutsche Telekom). Sue is currently an NED on the Boards of Wells Fargo Bank, General Magic and mBlox and has also held this role at Eltek ASA and Palm Inc.



LINDA HUDSON

Linda is President of Land and Armament Division at BAE Systems since 2008. She is currently a board member for USO Worldwide Operations and the University of Maryland, and was previously a committee member of the National Defence Industry Association. Linda received numerous awards such as the NIDA Firepower Award and Business Women of the Year Award.



FIONA MACRAE

Fiona is a Regional Head at Alliance Trust with her role as the Managing Director of European Equities since 2008.



CATHERINE TANNA

Catherine is an Executive Vice President at BG Group, and is also a Managing Director at Queensland Gas since April 2009. She has previously held the role of Division Executive VP at Royal Dutch Shell Group.



KAREN WOOD

Karen is Group Executive and Chief People Officer at BHP Billiton since 2007. Previous positions include Chief Governance Officer, Group Company Secretary, Special Adviser and Head of Group Secretariat. She is a member of the Takeovers Panel, a Fellow of the Institute of Chartered Secretaries and a member of the Law Council of Australia.



JULIA SIMPSON

Julia is Director of Corporate Communication at British Airways since 2007. Her previous roles include Assistant Chief Executive at London Borough of Camden, Advisor and Communications Director for the UK Office of the Prime Minister, and Head of Media Relations at the Department of Education and Employment.



VIVIENNE COX

Vivienne's 20 year career at BP includes a number of divisional directorships and CEOs. She holds NED positions at Rio Tinto and Climate Change Capital Ltd. She has an MBA from INSEAD and Masters degrees from Oxford University. In 2006 she was awarded the Veuve Clicquot Business Women of the Year Award, and in 2007 Fortune Magazine ranked her 16th in the World's 50 Most Powerful Business Women.



DEBORAH BAKER

Currently Director for People at BSkyB, since 2007, Deborah joined Sky from Burberry where she was Senior VP and Head of Worldwide HR. She was also HR Director at Laura Ashley. Deborah spent the early part of her career in various roles at companies such as Ford Motor Company, Schlumberger and Grand Metropolitan.



SHONA DOBBIE

Shona is a Managing Director and Head of the Research Centre at Alliance Trust. Previous roles there include Chief Economist.

**SOPHIE TURNER LAING**

Sophie has held MD positions at BSkyB since 2007. She began her career at Henson International Television. Sophie currently holds an NED position at Debenhams and is a trustee of BAFTA. In 2005, she won the Oslang Business Award for women in Film and Television in the UK.

JOY FROMMER

Joy is currently Chairwoman at Burberry France SASU and Regional President of the Burberry Group in Europe.

EUGENIA ULASEWICZ

Eugenia is Regional President Americas at the Burberry Group. Her previous roles include Director of the Midwest Area at Saks Inc, Operations Executive at Bloomingdales and Regional President USA at Galeries Lafayette.

**ANN SHERRY**

Ann is CEO of Carnival Australia since 2007. She has held senior bureaucratic roles in the Australian Government, as well as CEO positions at Westpac and the Bank of Melbourne. She holds NED positions on a number of boards including Wilson HTM Investment Group and the Australian Indigenous Education Foundation. She holds prizes such as the Queen's Award and the Australian Government's Centenary Medal.

**LORAIN WOODHOUSE**

Loraine joined the Liberty International group in 2008 as Capital Shopping Centres' Finance Director. She has previously worked with Whitbread, where she held the role of Division Financial Director for Costa Coffee. Loraine also held various senior finance positions within Credit Suisse and Kingsfisher.

MICHELE SMITH

Michele is currently Senior VP for the Womenswear Division at Burberry, after previously holding various positions within Barneys New York Inc.

**PAMELA CONOVER**

Pamela was named CEO and Division President of Seabourn Cruise Line in 2006. She was previously President and COO of Conrad Line Ltd and advisor for Citigroup. Pamela also has an NED position on the board of Florida Caribbean Cruise Association.

**TAMARA MINICK-SCOKALO**

Tamara is the Regional President (Europe) for Cadbury plc since 2007. Prior to that she held significant roles at Elizabeth Arden International, E&J Gallo Winery Europe, Coca-Cola and Procter & Gamble. She left P&G as Marketing Director, having started her career there some 18 years earlier as an engineer.

**JANE KINGSTON**

Jane joined the Compass Group as HR Director in 2006. She became HR Director of BPB in 2002, after spending the majority of her career in a range of international HR roles in the motor, textile and electrical appliance industries. She is also a member of the Corporate Responsibility Committee.

**CATHERINE MAY**

Catherine joined Centrica as Director of Corporate Affairs in September 2006, having previously been Group Director of Corporate Relations for Reed Elsevier. Prior to that, she was a partner at Luther Pendragon and held various positions at US West International.

**DEIRDRE MAHLAN**

Deirdre was appointed Deputy CFO of Diageo in 2009 after having been Head of Tax and Treasury Division and CFO with Diageo North America. She previously held various senior finance positions at Joseph E Seagram & Sons.

**RHIAN DAVIS**

Rhian is a Partner of Electra Partners LLP. She joined EPL in 1992 from PricewaterhouseCoopers where she qualified as a Chartered Accountant. She represents Electra's interest on the board of Lil-lets Group, and is a member of the Investment Committee at EPL.

**MOUNISSA CHODIEVA**

Mounissa is Head of Investor Relations and Public Relations at the Eurasian Natural Resources Corporation since 2006, having previously held the position of VP of Corporate Finance. Mounissa is currently undertaking a PhD in International Law at the Moscow State Institute of International Affairs.

**CHARLOTTE HOGG**

Charlotte became Managing Director of Experian UK and Ireland in 2008. Her previous roles were MD of Discover Financial Services and Group MD at Morgan Stanley. Charlotte has a BA from Oxford University and was a Kennedy Scholar at the Kennedy School of Government, Harvard University.

**NICOLA SHAW**

Nicola is a Regional Executive Director on the board of FirstGroup since 2009, and a Divisional Managing Director from 2005. Prior to that she was a Managing Director at the Strategic Rail Authority and had various roles at Halcrow Holdings, London Transport and World Bank. Nicola holds degrees from Oxford University and MIT.

**LILIANA SOLOMON**

Liliana is CEO of Vodafone Romania. She joined Vodafone from Cable and Wireless where she combined the roles of Chief Financial Controller for C&W UK and Chief Financial Officer for their international operations. Previously she was the CFO at T-Mobile UK and EVP Controlling and Business Management for Deutsche Telekom.

JANE STEVENS

Jane is currently an Executive Officer at Friends Provident where she has been since 2005. She is also Managing Director of Operations at Friends Provident Life and Pensions Limited and has been a Fellow of the Institute of Actuaries for over 20 years.

AINASH OMARBAYEVA

Ainash is a Divisional Finance Director and Executive Officer of Kazakhmys since 2007. She is also corporate finance manager for Charaltyn JSC. Previous corporate finance roles include Eurasia Gold and Deloitte LLP. Ainash is an American Certified Public Accountant and has a Masters degree from Cass University Business School.

**DAWN REID**

Dawn became Division Director at Friends Provident in 2006, after being Compliance Director and Executive Officer within the company.

**DEIRDRE CONNELLY**

Deirdre assumed the role of President at GlaxoSmithKline North American Pharmaceuticals in 2009. Prior to this, she was President of the US operations at Eli Lilly, SVP in HR and held various other roles in sales and marketing. In addition, she sits on the boards of Macy's and Indianapolis Opera as an NED. In 2009, she ranked 73rd in Forbes Magazine's list of The World's 100 Most Powerful Women.

**IMELDA WALSH**

Imelda has been HR Director at Sainsbury's since 2001, appointed to the Operating Board in 2004. She is an NED on the Board of Sainsbury's Supermarkets. Previously she worked for Diageo, Barclays Retail Financial Services, Coca-Cola and Schweppes Beverages. She holds an MSc from London School of Economics. In 2008, Imelda was asked to write The Flexible Working Review for the UK government.

**CLAIRE THOMAS**

Claire is a Senior VP Human Resources at GlaxoSmithKline since 2008. Her previous roles within the company include Division Senior VP Human Resources Pharmaceuticals International and Europe. Prior to joining GSK, Claire held various sales and marketing positions in Ford Motor Company. In 2007, Claire was honoured as an Outstanding European Woman of Achievement.

**SARA WELLER**

Sara has been Division Managing Director and board Executive Director at Argos since 2004. She is a member of the Government Advisory Group in Advertising and a Visiting Fellow at Said Business School, Oxford University. Sara holds an NED at Mitchells & Butlers and has previously held an executive directorship on the board of Sainsbury.

**MARIA THOMPSON**

Maria Thompson became Commercial Director at Home Retail Group in 2006. Previous roles include Commercial Director at Argos.

**SALLY LEAROED**

Sally joined Hammerson as an HR Director in 2008. Her career spans the fields of travel, marketing, services and pharmaceuticals. She worked in client account management and a marketing service agency before turning to the field of HR.

**SHEILA KING**

Sheila became Division Director of Group Retail Leasing at Hammerson in 1994, after holding various positions at Capital Shopping Centre. She is a founder of Cafe Rouge, Gourmer Burger Kitchen, Restaurant Group and Wagamama Group. Sheila is also an Advisor for the British Council of Shopping Centres and is a member of the Royal Institute of Chartered Surveyors.

**IRENE COWDEN**

Irene has been Group HR Director for G4S since 2004. Prior to that, she was HR Director for First Africa Security and for Securicor, where she also held an executive board position. She is a council member at Accipitor Ltd and a member of the Chartered Institute of Personnel and Development.

**SIAN LEWIS**

Sian is currently Head of UK Renewals for Admiral Group. Having worked for the group for more than 15 years, she launched the Diamond operation and was previously Managing Director.

**DEBBIE JONES**

Debbie is Senior VP of Corporate Development at Inmarsat Group since 2008. Previously, Debbie was Advisor at Eversheds LLP and Head of HR at Companies House Steering Board. She also held various positions within the UK Department of Trade and Industry and is a member of the Chartered Institute of Personnel and Development.

**TRACY ROBBINS**

Tracy has been Executive Vice President, Global Human Resources at InterContinental Hotels since 2005. Previously she was at Compass Group PLC where she held the position of Group HR Director and Development Director. Throughout her career, Tracy has held a number of senior HR roles at British Home Stores, Forte Hotels and Tesco Stores.

**PENNY CHALMERS**

As Head of Global Resources at International Power, Penny is responsible for Group human resources, information technology and corporate communications. She has 20 years of experience in the sector and has been with International Power since 1997.

**GULSHAT ZHOLAMANOVA**

Gulshat joined Kazakhmys in 2005 as the Director of Financial and Technical Control Department and was appointed Vice Chairman for Financial and Economic Matters in 2008. She graduated in Information Systems in Economics from the Kazakh State Management Academy.

**ANGELA WILLIAMS**

Angela has been Human Resource Director at Land Securities since 2005. Prior to that, she was Regional HR Director for Europe at Electronic Arts and HR and Development Vice President at Tradus. Throughout her career, Angela has also held managerial roles at Walt Disney, BH Blackwell and was Advisor for Esso.

**CAROLINE KIRBY**

Caroline joined the Liberty International group in 1992 and was appointed Director of Capital Shopping Centres in 2005. She is responsible for the investment management of the shopping centre portfolio. Caroline is a member of the Royal Institution of Chartered Surveyors.

**TANITH DODGE**

Tanith became Director for Human Resources at Marks & Spencer in 2008 after previously being Group HR Director for WH Smith and Regional Senior VP Human Resources for Intercontinental. She held senior HR roles within Allied Domecq, Diageo and Prudential Corporation. Tanith sits on the board of Regent Inns as an NED.

ALEXIS COLES-BARRASSO

Alexis is Communications and PR Director at Thomas Cook Group. She joined the company in 1993 and was CEO of Thomas Cook Retail. Prior to this, she held a number of senior marketing positions with the car rental business, Hertz International, and worked for a corporate communications consultancy advising blue chip clients on strategic communications.



NAYNA MCINTOSH

Nayna became Division Director for Store Marketing and Design at Marks & Spencer in 2008, Director for UK Store Presentation and General Merchandise Presentation. She was part of the executive management team that set up Per Una Brand. Nayna was previously Director of Sales and Marketing for Asda Stores and Regional Executive South of England for Asda Stores and for Next.



LOIS WARK

A member of the Randgold Resources team since its inception, Lois is currently Group Corporate Communications Manager. She is responsible for the coordination of the group's communication and investor relations programmes as well as for the management of its South African subsidiary, Seven Bridges. Lois holds a diploma in land surveying (cadastral and topographical).



SALLY BOTT

Sally is Executive VP and Global HR Director for BP since 2005. She also holds NED roles on the boards of UBS AG, Carter Burden Centre and Royal College of Music. Previously, Sally was HR Director at Barclays and Citibank and Managing Director and Head of Global HR at Marsh & McLennan.



DR SYLVIE GREGOIRE

Sylvie joined Shire in 2007 and is currently President of Shire Human Genetic. She has over 20 years of pharmaceutical and biotechnology experience. Sylvie recently served as Executive Chairwoman of IDM Pharma, after having been CEO of GlycoFi and having held numerous leadership positions at Biogen Inc. She received her Doctor in Pharmacy degree from the State University of New York.



ANITA GRAHAM

Anita has been with Shire since 2004. She is Executive Vice President Corporate Business Service Group and Chief Administrative Office and a member of Shire's Leadership Team. She has extensive experience in HR, in both Europe and the US, after being Vice President of Human Resources at Cytec Corporation and holding senior HR positions at Serono and Scudder Kemper Investments.



BARBARA DEPTULA

Barbara is Chief Corporate Development Officer at Shire since 2008. She also sits on the board of CombinatorX as an NED. Barbara was previously President of the Biotechnology Division of Sicom. She held senior management positions in marketing, product development, licensing and business development at various companies. She has an MBA from Chicago Graduate School of Business.



SILLA MAIZEY

Silla Maizey is Acting Customer Director for British Airways. Prior roles include Head of Corporate Responsibility, Head of Procurement and finance positions in BA and HSBC. She previously sat on the boards of AAA, Airline Group and Bar UK. Silla is Chairman of the Chartered Institute of Purchasing and Supply and was Director of the British Airways Flying Club (BAFC).



TANIA DE WELZIM

Tania is Group Financial Controller at Randgold Resources. She is a chartered accountant with ten years' experience in finance including eight years in the mining industry. She is responsible for financial reporting in the group as well as internal control procedures.



SHELLY LAZARUS

Shelly has been Executive Officer at WPP since 2008. She has held top level roles in Ogilvy & Mather Worldwide such as CEO and Regional President. Board experience includes NED (General Electric, Merck & Co, Ogilvy & Mather Worldwide, Ann Taylor Stores, Retirement Equities Fund) and as an ED (Ogilvy & Mather Worldwide). She is repeatedly in Fortune's list of 50 Most Powerful Women.



KATHRYN TURNER

Kathryn is HR Group Director for Imperial Tobacco, since 2002. She sat on the board of Atladis as an NED and on the board of Somerfield as an ED. Prior to that, Kathryn was Operations Director at United Kenning.



DONNA IMPERATO

Donna is CEO and Division President at WPP.



TAMARA INGRAM

Tamara is a WPP Division CEO and CEO of Grey Global Group since 2005. She is an NED on the board of Sage Group, at London Development Agency and Chairwoman of Visit London Ltd. Previous roles include Division President at WWP Group, President at the Kantar Group, CEO at McCann, Executive Director at Saatchi & Saatchi and President at the Henley Centre.



ANNE MINTO OBE

Anne became HR Director of Centrica in 2002. Prior to that, she was HR Director for Smiths Group and Chairman of the Centrica Pension Schemes. Anne was an NED board member at Aberdeen Enterprise Trust, Chairman and VP of the Institute for Employment Studies, member of the National Employer Advisory Board and Chairman of the Engineering Development Trust.



MARCIA SILVERMAN

Marcia is Chairman of the board at Ogilvy Public Relations Worldwide and Executive Officer at WPP. She has been at the company for 27 years and was recently named PRWeek's 2009 PR Professional of the Year.



LYNN O'CONNOR VOS

Lynn is a Division President and CEO at WPP.

SARAH MANLEY

Sarah has been Senior Vice President Marketing and Communications at Burberry since 2008, after having previously held positions such as PR Director for Luxlook.com, and Regional Director for Polo Ralph Lauren and Yves Saint Laurent Parfums.



ELLEN ALEMANY

Ellen became Regional CEO at the Royal Bank of Scotland in 2007, after various other regional CEO positions. She is an NED on the boards of Federal Reserve Bank of Boston and Financial Services Roundtable and was Governor of the USA Federal Reserve System. Ellen was listed in Forbes 100 Most Powerful Women and in US Banker Magazine The 25 Most Powerful Women in Banking.

**ORLAGH HUNT**

Orlagh became Group Human Resources Director at the Royal & Sun Insurance Group in 2006. She was previously Head of Human Resources for AXA Sun Life and has previously worked at Pepsi Cola, Walkers and Tesco in a variety of HR management roles. Orlagh is a member of the Chartered Institute of Personnel and Development and has a BA from Oxford University.

**JANINE HAWKINS**

Janine is a Division Global CEO at WPP

**CLARE SHEIKH**

Clare joined RSA Insurance Group as Strategy, Marketing and Customer Director in 2007, from Director of Marketing & Commercial Strategy at ITV plc, on the Executive Management Board. Clare is a former MD of AA Financial Services. She is also an NED of Alliance Trust plc and an ED at the Marketing Society. A Cambridge post-graduate, she was ranked 20th in Power 100 Marketers.

**ANNE JAEGER**

Anne became Chief Auditor at RSA Insurance Group in 2008. Prior to that she was Regional Chief Auditor, in Denmark. She was part of the Codan Group Executive leadership team and was previously CFO at Maersk Data and CFO at Codan. She spent 13 years with KPMG as a State Authorised Public Accountant. She holds an MSc from Copenhagen Business School.

**SUE CLARK**

Sue Clark was appointed Corporate Affairs Director at SABMiller in 2003. Prior to this, she held a number of senior roles in UK companies, including Director of Corporate Affairs at Railtrack Group and Scottish Power.

**KAREN GEARY**

Karen has been HR and Corporate Communications Director for Sage Group since 2005, and has more than 20 years of international HR experience across a variety of industries, in companies such as Monsanto Inc., Electrocomponents Group, and Stena Line. Karen currently serves on the Advisory Board at Durham University Business School.

**DIDO HARDING**

Dido is Convenience Director for Sainsbury's, on the Operating Board. Previous roles at Tesco include Division CEO Development Program, International Support Director, and Commercial Director. Prior to this, Dido worked at Kingfisher plc and Thomas Cook Ltd. She began her career as a consultant with McKinsey. Dido is an Oxford University graduate and holds an MBA from Harvard University.

**VALERIE PETITBON**

Valerie is an Executive Officer at Hammerson plc, where she was previously Director of Marketing and Communications. Prior to that she held the same role at Concorde Hotel Group and then at Grand Optical.

**SUE KEAN**

Sue assumed the role of Chief Risk Officer at Friends Provident in 2008. Prior to that, she was Project Manager at the Financial Services Authority, Risk Director at AVIVA and Consultant at PricewaterhouseCoopers. Sue is a Chartered Accountant and was Committee Chairman at the International Association of Insurance Supervisors.

**LIZ HEWITT**

Liz has been Group Director of Corporate Affairs for Smith & Nephew since 2004. She worked for 10 years in the venture capital industry for Gartmore Investment Limited, Citicorp Venture Capital Limited and 3i Group plc. Liz was seconded by 3i to the Department of Trade and Industry to work on an SME financing programme. Liz is a Trustee of Cancer Research UK.

**ELIZABETH BOLGIANO**

Elizabeth joined Smith & Nephew in 2004 as SVP in Human Resources and Orthopaedics and was appointed Group Director of Human Resources in 2007. Prior to joining Smith and Nephew, she was HR Vice President with Bristol-Myers Squibb, supporting US and international businesses, as well as global research institutes. Elizabeth holds an MBA from Cornell University.

**MARCIA CAMPBELL**

Marcia became Group Operations Director at Standard Life after holding various positions over the last 15 years. She is an executive director on the board of HDFC Standard Life Insurance Company and an NED on the boards of Financial Services Skills Council, Queen Margaret University College, Scottish Business in the Community, and the Financial Services National Training Association.

**SAILA MIETTINEN-LÄHDE**

Saila joined Talvivaara mining in 2005 as CFO and executive board member. Previously, she worked as a founding partner of SIDOS Partners and was a Director at D. Carnegie AB. Saira also served as Vice President of Business Development at Orion Pharma, and as Director of the Finnish National Fund for Research and Development, after holding various positions at Leiras Oy.

**GEORGINA HARVEY**

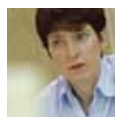
Georgina is Regional MD Newspapers Division at Trinity Mirror since 2005. Previously at IPC Media as Group Advertising Sales Director for SouthBank she went on to form IPC Advertising, as MD. After becoming a member of the Board of IPC Media, she was appointed MD of Wallpaper Group. Georgina is Director of the National Readership Survey and Chairman of the Periodical Publishers Association.

LORRAINE CORR

Lorraine is the Group Manager for Data, Finance and IT at Tullow Oil plc.

**GENEVIEVE BERGER**

Genevieve is Chief Research and Development Officer at Unilever since 2008. She was recently Health Chairman for the Commissioner for Research within the European Commission. Genevieve held NED board positions at Unilever, Ecole Supérieure de Lyon, and France's Institute for Marine Development. She was President of France Innovation Scientifique et Transfert and Director at the CNRS.

**ANNE HYLAND**

Anne joined Vectura in 2002, as CFO, Company Secretary and Executive Director. Prior to this, she was a Director of Corporate Finance at Celltech Group plc. She joined Celltech following the merger with Medeva plc, where she was Finance Director for the UK Division. Anne was also an audit manager at KPMG, London.

**MURIEL ANTON**

Muriel became CEO of Vodafone Czech Republic in 2008, having served before as the CFO. Muriel started her career as an Economist at IMC Consulting Group in Canada, lecturing in economics at the University of Alberta. She held various roles in finance within AGT Ltd and BCT Telus Communications (including Finance Director).

**EILEEN CAMPBELL**

Eileen is CEO at Mildward Brown Inc and an Executive Officer at WPP.

**GWYN BURR**

Gwyn joined the Operating Board of Sainsbury in 2004 becoming Customer Director in 2007. She was previously at Nestle Rowntree and ASDA/Wal-Mart where she held various Board level positions. Before joining Sainsbury's, Gwyn founded her own marketing consultancy, The Resultant Team.

**LOUISE SMALLEY**

Louise is HR Director at Whitbread since 2007. Previously, she was HR Director for Whitbread Restaurants and David Lloyd. Louise is a trustee at People 1st Ltd.

PRISCILLA VACASSIN

Priscilla has been the Group HR Director at Prudential since 2005. She holds an NED position at the UK's Ministry of Defence. Previously she held an executive board position at Abbey National. Her career includes various previous directorships at BAA, Superdrug, and Woolworths.

LORI DOYLE

Lori became Chief Marketing Office at Xchanging in 2009. Previous roles include VP Global Marketing and Business Development at Unisys Corporation, VP Global Marketing for Avaya Inc. and Director, Brand Management at AT&T Corporation. Lori holds a BA in Sociology from the University of California, and an MBA from Wharton.

**HELEN STEVENSON**

Helen is an Executive Officer at Yell Group PLC and Chief Marketing Officer of Yell Ltd. She currently holds a non-executive directorship at the Department for Work and Pensions. Previous roles include Regional Director at Mars Confectionery, where she worked for 18 years, and more recently Marketing Director at Lloyds TSB Group. Helen has a degree from Cambridge University.

**TANUJA RANDERI**

In COLT Telecom Group, Tanuja is Head of Multi-National Business, Major Enterprise Division. She was previously Vice President of Global Strategic Initiatives and Vice President of Software Operations at EMC Group. Prior to EMC, Tanuja was associate partner at McKinsey & Company. Tanuja has worked extensively in India and the US. She holds an MBA from Boston University.

**MAGGY MCCLELLAND**

Maggy became MD of COLT Managed Services Division in 2008. Previously at BT as President Global Business Operations & Professional Services, Maggy was also Corporate Officer and General Manager of Motorola Professional Services. She sits on the board of Partnership Sourcing and is a member of the Advisory Board of Sutherland Global Services.

**SUSAN RINGDAL**

Susan joined HIKMA Pharmaceuticals in 2005 as Investor Relations Director, having previously worked for the pharmaceutical distribution and retail pharmacy group Alliance UniChem plc as Investor Relations Manager. She also has experience as an equity analyst at Morgan Stanley in London. Susan holds a BA in History from Cornell University and an MBA from London Business School.

**ALISON WHEATON**

Alison became Director of Business Development at Mitchells and Butlers in 2008, after being Director of Strategic Planning and IT within the company. She was an NED on the board of Mitchells and Butlers Finance and London Development Agency, in addition to being the owner of Hollywood Bowl. Alison was previously employed by Pepsi Cola, Lever Brothers and Morgan Stanley.

REBECCA HUGHES

Rebecca is Head of Investor Relations at SVG Capital since 2005. Prior to joining SVG Advisers, she was head of client services at Global IR. She also worked at Taylor Rafferty, a leading IR consultancy where she managed a wide variety of investor programs for publicly quoted companies. She has a degree in Politics and International Relations from UWE, Bristol.

ANNE HELEN RICHARDS

Anne is Chief Investment Officer at Aberdeen Asset Management and Murray Income Trust, since 2003 and 2005 respectively. She was previously a joint Managing Director, Chief Investment Officer and Executive Director at Edinburgh Fund Managers Group. Anne was also an MD at Merrill Lynch. She is a UK Chartered Engineer and holds an MBA from INSEAD.

**CAROLYN FAIRBAIRN**

Carolyn is Group Development and Strategy Director at ITV since 2007. She is Chairman at Freesat and an NED on the boards of the FSA and Digital UK. Carolyn was previously a partner at McKinsey, Strategy Director at the BBC and a member of Downing Street Policy Unit. She was a journalist for the Economist and World Bank. Carolyn holds a degree from Cambridge and a MBA from INSEAD.

**SERPIL TIMURAY**

Serpil is CEO of Vodafone Turkey since 2009. Prior to that, she was General Manager and CEO at Danone Turkey and has held various senior marketing roles within Danone, Sanipak and Procter & Gamble. Serpil is a member of the Turkish Industrialist and Businessmen Association. She was declared the Most Successful Businesswoman of the Food & Beverage Sector in 2003.

**TAGHREED AL-SHUNNAR**

Taghreed is Executive Vice President Head of Pharma at HIKMA. In 1995, she was appointed as Marketing Planning Director of Hikma Pharmaceuticals Limited and in 2002 was promoted to General Manager of Hikma Pharmaceuticals. In 2005, Taghreed became Corporate Vice-President of Branded Pharmaceuticals MENA. Taghreed has an Executive MBA from INSEAD.

**MARY ELLEN HOWE**

Chief Operating Officer, Specialist Communications, North America for WPP. Previous roles held in WPP include Chief Financial Officer, North America.